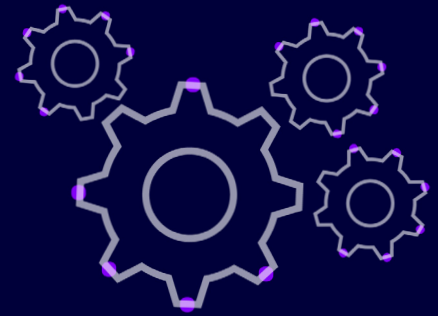




# Outsourcing risk project



[www.orx.org](http://www.orx.org)  
+44 (0)1225 904 397

How do you assess what outsourcing does to your operational risk profile?

Are you concerned about managing your operational risk exposure in the hands of a third party?

Are you sure you know who is responsible for what?

The ORX Outsourcing risk project will help you understand the new risks and operational impacts that have emerged as the industry has changed.

Many institutions outsource operations. But what is outsourcing, how is this decision reached, and how do you assess the impact on your operational risk profile?

Whatever the outcome of outsourcing, you need to be aware of the changes and manage them appropriately.

## The project

Running from September 2017-May 2018, this project will identify current industry practices. Participants will then be able to benchmark themselves against these. At the end of the project you will be aware of what the industry practice is, and how your own approach compares to this.

Understanding the central approaches to how the risks are managed is key. To do this we'll:

- Conduct a detailed survey to understand how institutions are assessing and managing the operational risk impacts of outsourcing, and how this is governed
- Identify and agree the current range of practices across the financial services industry
- Develop maturity matrices to allow you to compare yourself to the industry practice
- Benchmark your approaches to the industry practices

## What will you get for participating?

- A methodology study based on survey results
- A maturity matrix: bespoke reporting for participating firms as well as an industry benchmark
- The opportunity to participate in roundtable discussions

## Find out more

To find out more about the project visit: [managingrisktogether.orx.org/research/outsourcing-risk](http://managingrisktogether.orx.org/research/outsourcing-risk)

## Take part

To take part in this study please register via the website: [managingrisktogether.orx.org/research/outsourcing-risk](http://managingrisktogether.orx.org/research/outsourcing-risk)

Or contact Sarah Reed, Research Manager, ORX:



[sarah.reed@orx.org](mailto:sarah.reed@orx.org)

To participate in this study, you will need to respond by the end of October.

## Cost

The project is **free** for ORX Members to participate in. Participation for non-members costs £8,950.

This fee is refundable if your firm becomes a Member of ORX before the end of 2019.

